

Photoid des cétacés de Méditerranée - 4 -



Aurelie MOULINS & Massimiliano ROSSO
CIMA Research Foundation

Joint workshop on Estimating Cetaceans' Abundance
Bizerte, (Tunisia) 25-28 February 2019

01 / 32

Catégories de marques naturelles

La coloration



Joint workshop on Estimating Cetaceans' Abundance
Bizerte, (Tunisia) 25-28 February 2019

02 / 32

Catégories de marques naturelles

Marques causées par les
interactions INTRA-spécifiques



Joint workshop on Estimating Cetaceans' Abundance
Bizerte, (Tunisia) 25-28 February 2019

03 / 32

Catégories de marques naturelles

Marques causées par les
interactions INTER-spécifiques



Joint workshop on Estimating Cetaceans' Abundance
Bizerte, (Tunisia) 25-28 February 2019

04 / 32

Catégories de marques naturelles

Les autres marques

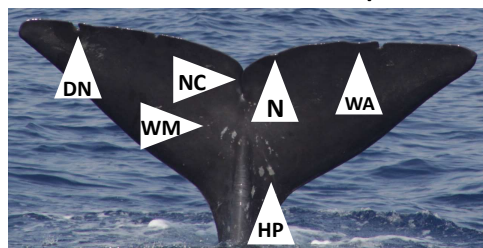


Joint workshop on Estimating Cetaceans' Abundance
Bizerte, (Tunisia) 25-28 February 2019

05 / 32

Classification des marques

15 sur la queue



N: nick
DN: distinct nick
NC: notch closed
NO: notch open
HP: hypo-
pigmentation
WM: white mark
MP: missing portion
WA: wave

Joint workshop on Estimating Cetaceans' Abundance
Bizerte, (Tunisia) 25-28 February 2019

06 / 32

Classification des marques

15 sur la queue



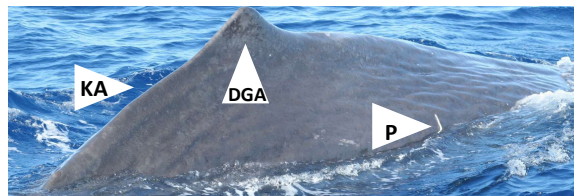
N: nick
DN: distinct nick
NC: notch closed
NO: notch open
HP: hypo-pigmentation
WM: white mark
MP: missing portion
WA: wave

Joint workshop on Estimating Cetaceans' Abundance
Bizerte, (Tunisia) 25-28 February 2019

07 / 32

Classification des marques

12 sur le flanc



DGA: dark grey area, KA: knob absent, P: parasites, LA: light area, LM: light mark, LS: linear scrapes, B: blister, W: wart-like, KP: knob present, W: wound, HP: hypo-pigmentation, BM: black mark

Joint workshop on Estimating Cetaceans' Abundance
Bizerte, (Tunisia) 25-28 February 2019

08 / 32

Classification des marques

12 sur le flanc



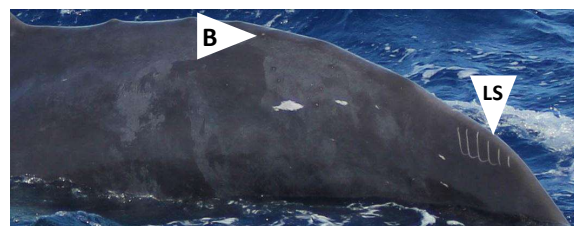
DGA: dark grey area, KA: knob absent, P: parasites, LA: light area, LM: light mark, LS: linear scrapes, B: blister, W: wart-like, KP: knob present, W: wound, HP: hypo-pigmentation, BM: black mark

Joint workshop on Estimating Cetaceans' Abundance
Bizerte, (Tunisia) 25-28 February 2019

09 / 32

Classification des marques

12 sur le flanc



DGA: dark grey area, KA: knob absent, P: parasites, LA: light area, LM: light mark, LS: linear scrapes, B: blister, W: wart-like, KP: knob present, W: wound, HP: hypo-pigmentation, BM: black mark

Joint workshop on Estimating Cetaceans' Abundance
Bizerte, (Tunisia) 25-28 February 2019

10 / 32

Classification des marques

12 sur le flanc



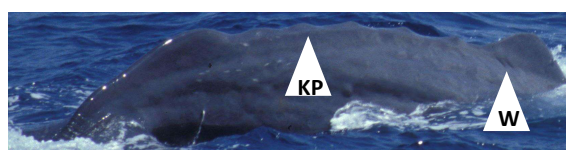
DGA: dark grey area, KA: knob absent, P: parasites, LA: light area, LM: light mark, LS: linear scrapes, B: blister, W: wart-like, KP: knob present, W: wound, HP: hypo-pigmentation, BM: black mark

Joint workshop on Estimating Cetaceans' Abundance
Bizerte, (Tunisia) 25-28 February 2019

11 / 32

Classification des marques

12 sur le flanc



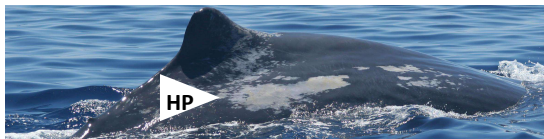
DGA: dark grey area, KA: knob absent, P: parasites, LA: light area, LM: light mark, LS: linear scrapes, B: blister, W: wart-like, KP: knob present, W: wound, HP: hypo-pigmentation, BM: black mark

Joint workshop on Estimating Cetaceans' Abundance
Bizerte, (Tunisia) 25-28 February 2019

12 / 32

Classification des marques

12 sur le flanc



DGA: dark grey area, KA: knob absent, P: parasites, LA: light area, LM: light mark, LS: linear scrapes, B: blister, W: wart-like, KP: knob present, W: wound, HP: hypo-pigmentation, BM: black mark

Joint workshop on Estimating Cetaceans' Abundance
Bizerte, (Tunisia) 25-28 February 2019

13 / 32

Classification des marques

12 sur le flanc



DGA: dark grey area, KA: knob absent, P: parasites, LA: light area, LM: light mark, LS: linear scrapes, B: blister, W: wart-like, KP: knob present, W: wound, HP: hypo-pigmentation, BM: black mark

Joint workshop on Estimating Cetaceans' Abundance
Bizerte, (Tunisia) 25-28 February 2019

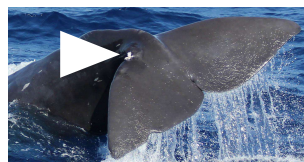
14 / 32

Classification des marques

Cicatrices de collision



Cicatrices d'enchevêtrement



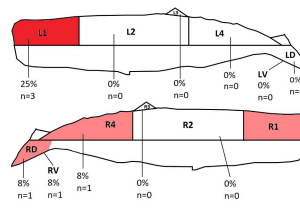
Joint workshop on Estimating Cetaceans' Abundance
Bizerte, (Tunisia) 25-28 February 2019

15 / 32

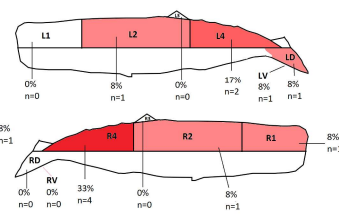
Cicatrices d'origine anthropique

11% (n=12) of 109 individual identified

Cicatrices de collision



Cicatrices d'enchevêtrement



Joint workshop on Estimating Cetaceans' Abundance
Bizerte, (Tunisia) 25-28 February 2019

16 / 32

Marques qui perdurent dans le temps

TOTAL LEFT S										
Mark class	BP	LA	DGA	WMA	LM	BM	LS	W		
Mark type	HP	LA	DGA	WMA	LM	BM	LS	W		
pi	0.70	0.29	0	0.79	0.23	0.24	0.53	6.0		
ai	2.21	15.48	0	11.84	8.56	2.05	3.21	0.6		
li	35.38	0	0	34.26	8.67	7.97	1.2			
mi	53	22	0	900	651	156	244	5		
ri	0.02	0.01	0	0.41	0.30	0.07	0.11	6.0		

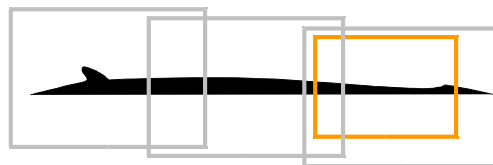
TOTAL RIGHT S										
Mark class	BP	LA	DGA	WMA	LM	BM	LS	W		
Mark type	HP	LA	DGA	WMA	LM	BM	LS	W		
pi	0.74	0.16	0.04	0.80	0.30	0.20	0.68			
ai	4.11	4.92	0.74	13.36	7.51	1.40	6.28			
li	19.69	10.55	1.00	25.05	7.00	2.97				
mi	52	11	3	885	228	98	440			
ri	0.02	0.00	0.00	0.40	0.24	0.04	0.20			

TOTAL FLIN										
Mark class	FO	WA	MP	HP	LA	DGA	WMA	LM		
Mark type	N	DN	WA	MP	HP	LA	DGA	WMA	LM	
pi	0.63	0.37	0.19	0.11	0.30	0.02	0	0.58	0.24	
ai	2.47	0.73	0.25	0.11	1.65	0.39	0	0.59	1.30	
li	2.00	1.33	1.00	2.54	7.75	0	11.20	5.42		
mi	195	58	20	9	26	2	0	520	103	
ri	0.18	0.05	0.02	0.03	0.02	0.00	0	0.48	0.09	

Joint workshop on Estimating Cetaceans' Abundance
Bizerte, (Tunisia) 25-28 February 2019

17 / 32

Le rorqual commun



1. Une séquence photo du flanc de l'animal (chaque photo couvrant 1/3 de l'animal)
2. Au moins une photo de la partie de la dorsale zoomée
3. Une photo du blason E et du chevron F sur le côté droit

Joint workshop on Estimating Cetaceans' Abundance
Bizerte, (Tunisia) 25-28 February 2019

18 / 32

Le rorqual commun

Joint workshop on Estimating Cetaceans' Abundance
Bizerte, (Tunisia) 25-28 February 2019

19 / 32

Le rorqual commun

Joint workshop on Estimating Cetaceans' Abundance
Bizerte, (Tunisia) 25-28 February 2019

20 / 32

Le cachalot

1. Une séquence photo du flanc de l'animal (chaque photo couvrant 1/3 de l'animal) dont une au niveau de la dorsale
2. Une séquence photo de la nageoire caudale lors de la plongée

Joint workshop on Estimating Cetaceans' Abundance
Bizerte, (Tunisia) 25-28 February 2019

21 / 32

Le cachalot

Joint workshop on Estimating Cetaceans' Abundance
Bizerte, (Tunisia) 25-28 February 2019

22 / 32

Le cachalot

Joint workshop on Estimating Cetaceans' Abundance
Bizerte, (Tunisia) 25-28 February 2019

23 / 32

Le cachalot

Joint workshop on Estimating Cetaceans' Abundance
Bizerte, (Tunisia) 25-28 February 2019

24 / 32

La baleine à bec de Cuvier

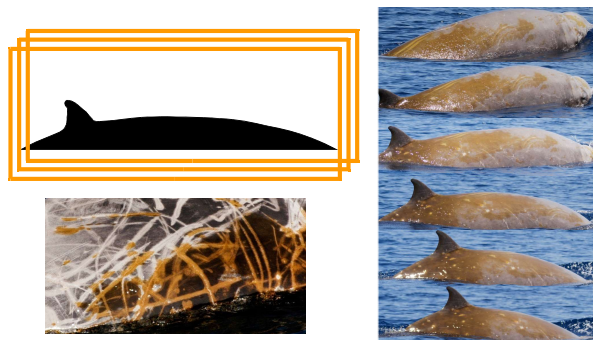


1. Une séquence photo du flanc de l'animal (chaque photo couvrant la totalité du flanc émergé de l'animal)
2. Une séquence photo de la tête (avant et lors de l'émergence)

Joint workshop on Estimating Cetaceans' Abundance
Bizerte, (Tunisia) 25-28 February 2019

25 / 32

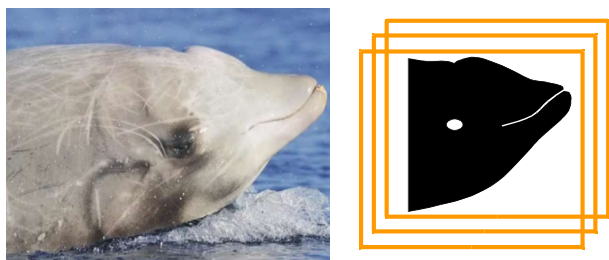
La baleine à bec de Cuvier



Joint workshop on Estimating Cetaceans' Abundance
Bizerte, (Tunisia) 25-28 February 2019

26 / 32

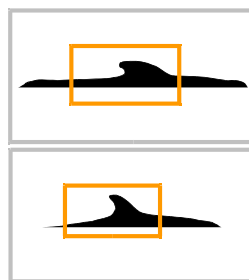
La baleine à bec de Cuvier



Joint workshop on Estimating Cetaceans' Abundance
Bizerte, (Tunisia) 25-28 February 2019

27 / 32

Le globicéphale Le grand dauphin

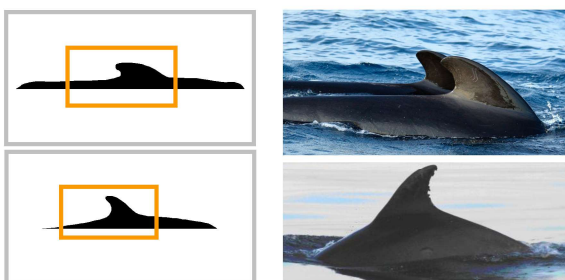


1. Une séquence photo du flanc de l'animal
2. Une photo zoomée de la dorsale et du pied de la dorsale

Joint workshop on Estimating Cetaceans' Abundance
Bizerte, (Tunisia) 25-28 February 2019

28 / 32

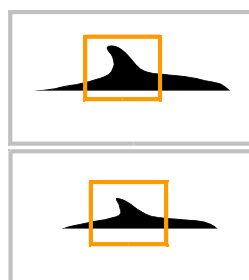
Le globicéphale Le grand dauphin



Joint workshop on Estimating Cetaceans' Abundance
Bizerte, (Tunisia) 25-28 February 2019

29 / 32

Le dauphin de Risso Le dauphin commun

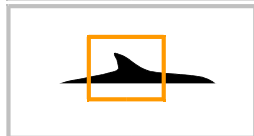
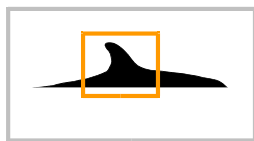


1. Une séquence photo du flanc de l'animal
2. Une photo zoomée de la dorsale

Joint workshop on Estimating Cetaceans' Abundance
Bizerte, (Tunisia) 25-28 February 2019

30 / 32

Le dauphin de Risso Le dauphin commun



Joint workshop on Estimating Cetaceans' Abundance
 Bizerte, (Tunisia) 25-28 February 2019

31 / 32

Le dauphin bleu-et-blanc

Seules les photos avec la totalité du corps est émergé



Joint workshop on Estimating Cetaceans' Abundance
 Bizerte, (Tunisia) 25-28 February 2019

32 / 32